



L I F E J A C K E T S

H A V E A  
S A F E D A Y



SPORTS  
2019



SECUMAR.COM

GUYOT  
équipement

MX



## THE FACTS ABOUT SECUMAR AND BERNHARDT APPARATEBAU

- Early 1950's Bernhardt Apparatebau started developing lifejackets.
- SECUMAR launched on the market in 1961.
- Auto-inflating SECUMAR BS 8 lifejacket radically reduced drownings on European inland shipping in the 1970's.
- SECUMAR lifejackets adopted by the German Lifeboat, other rescue services and professionals.
- SECUMAR offers a worldwide service and distribution network.



From all the SECUMAR crew, I would like to wish all lovers of watersports a great and safe season in 2019.

Benjamin Bernhardt



## WHICH LIFEJACKET IS THE RIGHT ONE FOR ME?

The number of lifejacket possibilities are as big as the number of areas in which it can be used, but it can't be all things to all people, so the big question is 'Which is the right lifejacket'?

The best way to answer this is to ask what it will be used for.

**In any case SECUMAR has the right lifejacket for you!**

### 1. Where will it be used?

Inland, coastal or offshore? Canoeing, dinghy sailing, keelboat sailing, motor boating or fishing? Each has its own requirements and will determine the decision over which lifejacket to choose.

### 2. What clothing will be worn?

Lightweight sailing kit or heavy foul-weather gear determines how much buoyancy the lifejacket must have. Take a look at the buoyancy classes on pages 4-5 for further clarity.

## PRODUCT PLANNER: BUOYANCY AIDS AND LIFEJACKETS

	SAILING YACHT	MOTOR YACHT	KEELBOAT DINGHY	PADDLERS	ROWERS	ANGLERS	KIDS	SWIMMING STAND-UP-PADDLING	
<b>50N</b> Buoyancy Aids 	—	—	Jump p.40 Jump Pro p.40 Echo p.41	Vivo 50 p.37 Echo p.41	Vivo 50 p.37	Jump p.40	—	Free 100 p.50	For regular swimmers near a beach or means of assistance, not for unconscious persons. This is not a lifejacket!
<b>100N</b> Lifejackets 	Bravo p.41	Bravo p.41	Bravo p.41	Vivo 100 p.36 Bravo p.41	Vivo 100 p.36	Vivo 100 p.36 Bravo p.41	Bravo Print p.33 Bravo S.33	—	Inland and protected waters. Not suitable for unconscious persons.
<b>150N</b> Lifejackets 	Survival 220 p.20 Arkona 220 p.24 Ultra 170 p.22 Ultra 170 Harness p.22	Survival 220 p.20 Arkona 220 p.24 Ultra 170 p.22 Secufit p.26	Ultra 170 p.22 Secufit p.26	Ultra 170 p.22 Secufit p.26	Secufit p.26	Arkona 220 p.24 Ultra 170 p.22 Secufit p.26	Mini p.30 Junior p.31 Arkona Midi p.32	—	For use in all waters and for unconscious persons unless wearing heavy or waterproof clothing.
<b>275N</b> Lifejackets 	Scout p.13 Survival 275 p.14 Survival 275 Duo Protect p.14 Arkona 275 p.17	Survival 275 p.14 Arkona 275 p.17	—	—	—	Survival 275 Duo Protect p.14 Arkona 275 p.17	—	—	For use in all waters and for unconscious persons, especially in heavy conditions and when wearing heavy or waterproof clothing.

## SECUMAR FIRING MECHANISMS

### SECUMATIC 4001S



Single red/green indicator displays the safety status of the inflator.

**Green means:**

- The soluble 'pill' is inserted.
- The CO<sub>2</sub> cylinder is properly screwed in.
- The manual release cord is properly set.
- The CO<sub>2</sub> cylinder is full and in order.

All this can be viewed and checked through the inspection window in the outer cover.

**Further advantages:**

- Bayonet system allows quick and safe installation of the CO<sub>2</sub> cylinder.
- A manual override system obviates any unwanted firing of the CO<sub>2</sub> cylinder.

### SECUMATIC 3001S



Three red/green indicators display the safety status of the inflator:

**Green means variously:**

- The soluble 'pill' is inserted.
- The CO<sub>2</sub> cylinder is properly screwed in.
- The manual release cord is properly set.

**Further advantages:**

- Unique 'POSITORQUE' screw system ensures secure and 'shakeproof' installation of the CO<sub>2</sub> cylinder.

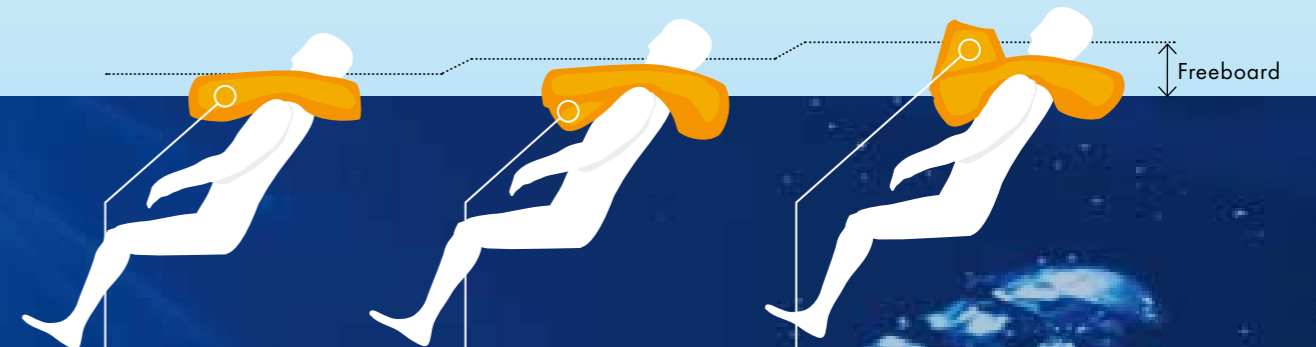
For more information about the manual over-ride attachment, see 'Accessories' on page 49.

## SECUMAR BUOYANCY CHAMBER

### CLASSIC



### 3D



High level of buoyancy even in the basic models with the '**Classic**' type.

'**Winglets**' on the sides for greater turning power and stability in the water.

**SECUMAR 3D-SYSTEM** with extra volume and chamber height for more freeboard and higher installation of PLB.

The construction of a buoyancy chamber is decided by its intended performance in water. The physical distribution of buoyancy should be at the side and behind the head of the lifejacket wearer so they are turned quickly from a potentially deadly position on their front to a stable position on their back with the head supported clear of the water.

\* SWATH (Small Waterplane Area Twin Hull) = special ship design with narrow hulls and deep draught for excellent rough weather stability.

## HOW TO BUILD AN INFLATABLE SECUMAR LIFEJACKET

### Padding

Higher wearers comfort.

### Inspection Window

Displays the firing mechanism status. Single point 'Green for Go'.

### Firing Mechanism

Sensor, when in contact with water, automatically triggers CO<sub>2</sub> inflation, or via manual release.



### 'Click' Buckle

For easy opening and closing.

### Harness

To tether you to the deck.

### SECUMAR Service Disc

An inspection sticker indicates the next service date.

### Sprayhood

Optional equipment.

### Retro-Reflective Strips

For better visibility.

### Lifting Becket

For holding alongside or lifting up to 320 kg.

### Emergency Light

Optional equipment.

### Mouthpiece

For oral inflation and eventual deflation of chamber.

### Whistle

To generate attention.



### DUO Protect SYSTEM

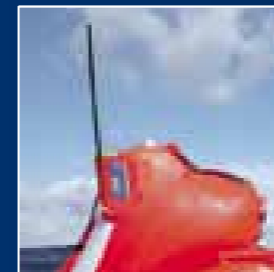
#### SELF-SEALING BUOYANCY CHAMBER: THE DUO PROTECT SYSTEM

Inside the swim chamber is another airtight stretch laminate so that if the outer skin (2) is punctured the internal gas pressure will force the inner skin (1) to overlap the hole and seal the leak.



#### PLB

Optional equipment; attached with a lanyard and held in a pocket.



#### SPRAYHOOD

Protects from spray and prevents drowning in 'flying water', keeps head warm. Optional equipment.





## 275 N Lifejackets

### Maximum flotation for increased safety

Lifejackets in the 275N class are for when you need the most amount of buoyancy, e.g.: when wearing heavy weather clothing or items that might hold air pockets. These lifejackets are constructed, so that they will give anyone, even if unconscious, the best chance of being rolled onto their back and their head being held high out of the water.

- Body weight > 50 kg (110 lbs)
- Chest < 135 cm (53")
- Click buckle
- 400 cm<sup>2</sup> 3M<sup>®</sup> reflective strips
- Lifting becket
- Whistle



# SCOUT

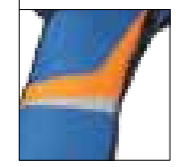
P/N 16062



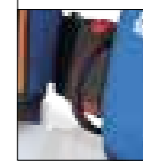
Complies with  
WORLD SAILING  
Offshore Special Regs!  
Sprayhood ✓  
SOLAS emergency light ✓  
Crutch strap ✓

- High-end 275N lifejacket for wearers of heavy weather clothing or survival suits.
- Buoyancy chamber with fastest and safest turning moment.
- Modular integration of different PLBs. High mounted on buoyancy chamber for better range.
- Comfortable to wear: low weight on the neck due to the HOVER-System.

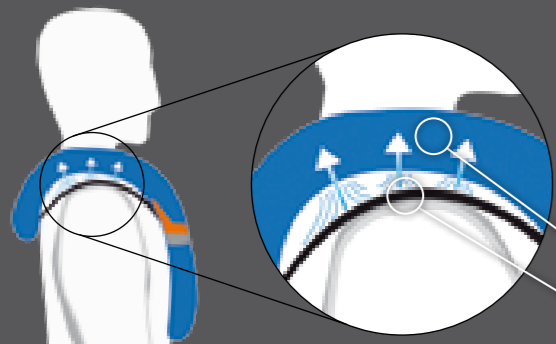
Reflective strips on outer cover



Soft textile 'D' ring



Pocket for optional PLB on buoyancy chamber.



## The Hover-System

Made possible by sharing the weight of the lifejacket equally over the shoulders, back and chest thereby creating better air circulation and less heat build-up.

The lifejacket floats on air.

Only the padded straps lie on the shoulders.



CE 3DA

MAXIMUM SAFETY

CO<sub>2</sub> Cylinder: 60 g Dock (P/N 12507)



HAVE A  
SAFE DAY

# SURVIVAL 275 SURVIVAL 275 Duo Protect

Duo Protect dark blue/orange: P/N 16699 | dark blue/orange: P/N 16689 | black/orange: P/N 16698

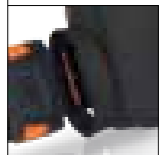


sprayhood  
standard

Exceptional  
wearer comfort  
through ergo-  
nomic pre-shaped  
shoulder area



Integral harness  
with textile D-Ring



Adjustable  
padded back  
strap



- SECUMAR 'winglet' buoyancy chamber for higher freeboard and stability in the water.
- PLB and SOLAS light optional.

- Duo Protect (optional): twin skin buoyancy chamber for double protection against mechanical damage.



CE



DUO  
Protect

ALSO AVAILABLE AS SURVIVAL 220 (see page 20) CO<sub>2</sub> Cylinder: 60 g Dock (P/N 12507)



**NEW**





# ARKONA 275

P/N 16376

*Tried and tested  
base model!*



- Classic design.
- Flattest shape 275N class lifejacket.

Unique 'Click' front buckle and integral harness



Side adjustment with tags for quick release



White reflective piping



CE CLASSIC

ALSO AVAILABLE AS **ARKONA 220** (see page 24)

CO<sub>2</sub> Cylinder: **56 g** (P/N 929)



HAVE A  
SAFE DAY



## 150N Lifejackets

Enjoy life in safety

The '150N category' can be regarded as the standard class of lifejackets. These products offer outstanding buoyancy, are comfortable to wear and ideal for use with lighter clothing in clement weather.

- Body weight > 50 kg (110 lbs)
- Chest < 135 cm (53")
- Click buckle
- 300 cm<sup>2</sup> 3M<sup>®</sup> reflective strips
- Lifting becket
- Whistle





HAVE A  
SAFE DAY

## SURVIVAL 220

light blue/blue/orange: P/N 16696 | light grey/grey/orange: P/N 16690



sprayhood  
standard

Exceptional  
wearer comfort  
through ergo-  
nomic pre-shaped  
shoulder area



Integral harness  
with textile D-Ring



Adjustable  
padded  
back strap



- Max. buoyancy for 150N class lifejacket.
- SECUMAR 'winglet' buoyancy chamber for higher freeboard and stability in the water.
- PLB and SOLAS light optional.



CE



CO<sub>2</sub> Cylinder: **43 g** Dock (P/N 15239)

**NEW**

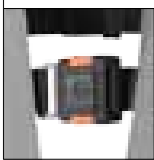


## ULTRA 170

Hawaiian Ocean / light grey / orange: P/N 16705  
grey / black / orange: P/N 16385



30mm 'Click' buckle with narrower chest belt



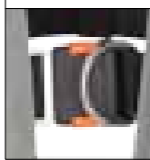
- Lightest 150N class lifejacket.
- Flat and light in weight.
- Ideal for motor boaters.

## ULTRA 170 Harness

Hawaiian Ocean / light grey / orange: P/N 16707  
grey / black / orange: P/N 16348



Unique 'Click' front buckle (50mm) and integral harness



- Lightest 150N class lifejacket.
- Flat and light in weight.
- Ideal for sailors.



CLASSIC

See **ULTRA Pack** in Accessoires (see page 49)

CO<sub>2</sub> Cylinder: **32 g** Dock (P/N 11433)



*Allround-Model*

**NEW**

## ARKONA 220

P/N 16375



*Tried and tested  
base model!*

Side adjustment  
with tags  
for quick release



Unique „Click“  
front buckle and  
integral harness



White reflective  
piping



- Classic design.
- Highest buoyancy in 150N class lifejackets.



CE CLASSIC

CO<sub>2</sub> Cylinder: 43 g (P/N 14344)



# SECUFIT

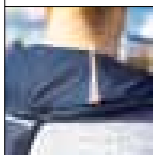
P/N 15732



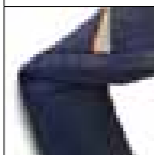
Freedom around the neck with padded back strap



Reflective strips front and back



Padded outer cover



- Extremely comfortable thanks to ergonomically preformed shoulder area.
- Extreme ease of movement and increased buoyancy with the SECUMAR Winglet system.
- Reflective strips for better visibility in low light conditions.



CE



COMFORTABLE 150N MODEL

CO<sub>2</sub> Cylinder: 32 g (P/N 927)





## Kit for Kids

**Children should never be without a lifejacket!**

Our small sailors need an extra helping of safety. SECUMAR offers several different options.

When children are near water they should wear a lifejacket, even standing on the dock or fishing with a net. Wearing a lifejacket should be as natural as using a seatbelt in the car - and just as important for the life of your child!



## MINI

P/N 15440



Superb wearer comfort through ergonomic pre-shaped shoulder area



Handhold at rear



Child safety: 3-fold front fastening



- Smallest inflatable lifejacket – much more lift than a foam buoyancy aid.
- No discomfort due to comfortable ergonomic fit.
- SECUMAR „Winglet“ buoyancy chamber.
- Twin skin buoyancy chamber for double protection against mechanical damage.
- Integral safety harness.



CO<sub>2</sub> Cylinder: 16 g (P/N 901)

## JUNIOR

P/N 15471



- New SECUMAR „Winglet“ buoyancy chamber for higher freeboard and stability in the water.
- Twin skin buoyancy chamber for double protection against mechanical damage.

„Twin-skin“ safety: Duo Protect System



Integral harness with unique „Click“ front buckle



Superb wearer comfort through ergonomic pre-shaped shoulder area



CO<sub>2</sub> Cylinder: 22 g (P/N 925)



## ARKONA MIDI

P/N 16379

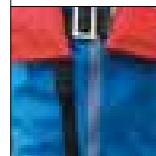


*Tried and tested  
base model!*

Integral harness



Integral crutch strap



- Classic design.
- Fleece collar to stop neck abrasion.



CE

**CLASSIC**

CO<sub>2</sub> Cylinder: **22 g** (P/N 925)

## BRAVO



- Fixed foam lifejacket with layered soft SECU foam filling.
- Double crutch strap.



CE

10-15 kg: P/N 13273  
15-20 kg: P/N 13274

20-30 kg: P/N 13275  
30-40 kg: P/N 13276

## BRAVO PRINT



- Top quality fixed foam lifejacket with especially soft SECU foam filling
- 5-10 kg and 10-15 kg versions include rear restraining handle and wide panelled crutch strap, 15-20 kg with wide panelled crutch strap only.



CE

5-10 kg: P/N 13269  
10-15 kg: P/N 13270

15-20 kg: P/N 13271  
20-30 kg: P/N 13531



## Paddlers and Rowers

Lifejackets with optimum freedom of movement

Rowing, kayak and canoeing are attracting ever more fans so SECUMAR has been developing special products for these disciplines such as VIVO and SECUFIT, designed in collaboration and using the experience of people in the sport.

It was with this help that the greatest problem of freedom of movement was overcome so that you can really rely on SECUMAR for safety and happiness on the water.

## VIVO 100

P/N 14224

## VIVO 50

P/N 14253



*manual  
operation*

- Specifically for rowers - narrow and flat across the chest.
- Reflective strips on the back for better visibility in low-light conditions.
- Chest < 120 cm.



- Buoyancy aid with laminated soft SECU foam.
- Practical 'one size fits all' with easily adjustable waist straps makes it ideal for clubs, sailing schools or renters.
- Front mesh pocket.



CE CLASSIC

LIGHTEST INFLATABLE LIFEJACKET

CO<sub>2</sub> Cylinder: 22 g (P/N 924)



CE

IDEAL FOR FREQUENT CONTACT WITH WATER

## Foam Buoyancy Aids

Flotation at the ready – and every time

Lifejackets and buoyancy aids from closed cell foam have an advantage because their buoyancy is permanent and they do not inflate by accident. They are performing well in any activity, such as dinghy sailing, kite or windsurfing, where the wearer is close to water. SECUMAR foam products feature good design and comfortable fit using warm and body protecting materials.

## JUMP PRO



*with practical zipped stowage pocket*

- Top-spec 50N dinghy and keelboat buoyancy aid.
- Greater safety with retro reflective strips in fluorescent colour.
- Easy adjustment and double velcro strap.



CE 30-40 kg: P/N 15196 | 70-90 kg: P/N 15198  
40-70 kg: P/N 15197 | 90-120 kg: P/N 15199

## JUMP



- Practical 50N buoyancy aid for serious dinghy sailors.
- Skin tight fit with a side closure.
- Good protection due to the foam padding.



CE 30-40 kg: P/N 13263 | 70-90 kg: P/N 13265  
40-70 kg: P/N 13264 | 90-120 kg: P/N 13266

## ECHO



- Comfortable, easy to wear 50N class buoyancy aid.
- Easily adjustable waist strap for quick putting on and taking off.
- Particularly suitable for clubs, sailing schools and renters.



CE 30-40 kg: P/N 11666 | 70-90 kg: P/N 11668  
40-70 kg: P/N 11667 | 90-120 kg: P/N 11669

## BRAVO



*available in 4 more sizes for children*

- Bright orange 100N lifejacket.
- Ergonomically cut for greater wearer comfort.
- High performance, soft, multi-layer SECU foam.



CE 40-50 kg: P/N 11674 | 70-80 kg: P/N 11676  
50-70 kg: P/N 11675 | 80-120 kg: P/N 11677

## SECUMAR PRODUCT OVERVIEW

### Inflatable Lifejackets



	SCOUT	SURVIVAL 275 Duo Protect	SURVIVAL 275		ARKONA 275	SURVIVAL 220		ARKONA 220	ULTRA 170		ULTRA 170 Harness		SECUFIT	VIVO 100	FREE 100
P/N	16062	16699	dark blue 16689	black 16698	16376	blue 16696	light grey 16690	16375	hawaiian 16705	black 16385	hawaiian 16707	black 16348	15732	14224	15872
Buoyancy chamber type	3D	WINGLET	WINGLET		CLASSIC	WINGLET		CLASSIC	CLASSIC		CLASSIC		WINGLET	CLASSIC	CLASSIC
Buoyancy class	275 N	275 N	275 N		275 N	150 N		150 N	150 N		150 N		150 N	100 N	50 N
Actual buoyancy	290 N	280 N	280 N		280 N	220 N		220 N	165 N		165 N		160 N	110 N	110 N
Comply to DIN EN ISO	12402-2 and 12401	12402-2 and 12401	12402-2 and 12401		12402-2 and 12401	12402-3 and 12401		12402-3 and 12401	12402-3		12402-3 and 12401		12402-3 and -6	12402-4 and -6	12402-5 and -6
Auto firing mechanism	SECUMATIC 4001S	SECUMATIC 4001S	SECUMATIC 4001S		SECUMATIC 3001S	SECUMATIC 4001S		SECUMATIC 3001S	SECUMATIC 4001S		SECUMATIC 4001S		SECUMATIC 3001S	SECU 301SM	SECUMATIC S31
CO <sub>2</sub> -Cylinder (P/N)	60g Dock (12507)	60g Dock (12507)	60g Dock (12507)		56g (929)	43g Dock (15239)		43g (14344)	32g Dock (11433)		32g Dock (11433)		32g (927)	22g (924)	22g (15866)
Outer cover closed with	Zip	Zip	Zip		Velcro	Zip		Velcro	Velcro		Velcro		Zip	Velcro	Velcro
Integral harness	textile D-Ring	textile D-Ring	textile D-Ring		•	textile D-Ring		•	-		•		-	-	-
Back section	Padded	Padded, adjustable	Padded, adjustable		Webbing	Padded, adjustable		Webbing	Webbing		Webbing		Padded, adjustable	Webbing	-
Sprayhood	GORE®	Polyamid	Polyamid		-	Polyamid		-	•		•		-	-	-
SOLAS emergency light	•	•	•		•	•		•	•		•		•	•	-
Firing mechanism access zip	•	•	•		-	•		-	-		-		-	-	-
Inspection window	•	•	•		-	•		-	•		•		-	-	-
Neck area	Softshell	Softshell	Softshell		-	Softshell		-	Fleece		Fleece		Softshell	Fleece	-
Crutch strap Simple / 2K CLICK 30	2K / •	• / •	• / •		• / •	• / •		• / •	• / •		• / •		• / •	- / -	- / -
Integral pocket for PLB*	•	•	•		•	•		•	•		•		-	-	-
For further information see	Page 13	Page 14	Page 14		Page 17	Page 20		Page 24	Page 22		Page 22		Page 26	Page 36	Page 50

\*For further information on PLB see [www.secumar.com](http://www.secumar.com)

## SECUMAR PRODUCT OVERVIEW

### Lifejackets for children

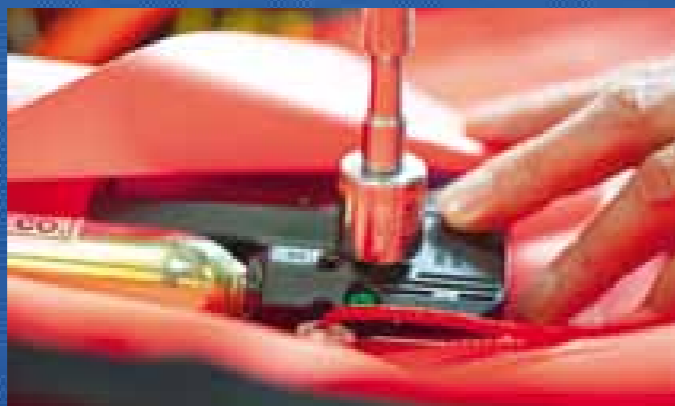
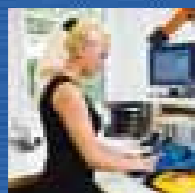
	JUNIOR	MINI	ARKONA MIDI	BRAVO	BRAVO PRINT
P/N	15471	15440	16379	see product page	see product page
Buoyancy chamber type	WINGLET	WINGLET	CLASSIC	-	-
Buoyancy class /comply to	150N / DIN EN ISO 12402-3 and 12401			100N / DIN EN ISO 12402-4	
Body weight / Actual buoyancy	20-50 kg/ 110N	15-30 kg/ 90N	20-50 kg/ 110N	10-15 kg / 30 N 15-20 kg / 40 N 20-30 kg / 40 N 30-40 kg / 50 N	5-10 kg / 30 N 10-15 kg / 30 N 15-20 kg / 40 N 20-30 kg / 40 N
Chest	58 - 82 cm	49 - 72 cm	72 - 90 cm	-	-
Auto firing mechanism / fixed foam	SECUMATIC 3001S			SECU Foam	SECU Foam Soft
CO <sub>2</sub> -Cylinder (P/N)	22 g (925)	16 g (901)	22 g (925)	-	-
Whistle	•	•	•	•	•
3M® Retro-reflective strips	300 cm <sup>2</sup>	300 cm <sup>2</sup>	300 cm <sup>2</sup>	100 cm <sup>2</sup>	100 cm <sup>2</sup>
Integral harness	•	•	•	-	-
Front closure	CLICK 30	CLICK 30	Metall	Plastic	Plastic
Inspection window	-	-	-	-	-
Neck area	Micro-Fleece	Micro-Fleece	Fleece	-	-
Back section	Webbing	Webbing	Webbing	Webbing	Webbing
Lifting strop	•	•	•	-	-
SOLAS emergency light	◦	◦	◦	-	-
Crutch strap	•	•	•	double	•
For further information see	Page 31	Page 30	Page 32	Page 33	Page 33

### Foam Buoyancy Aids

	JUMP PRO	JUMP	ECHO	BRAVO	VIVO 50
Buoyancy class / comply to DIN EN ISO	50 N / 12402-5		50 N / 12402-5	100 N / 12402-4	50 N / 12402-5
Body weight / Actual buoyancy	30-40 kg / 35 N 40-70 kg / 45 N 70-90 kg / 50 N 90-120 kg / 50 N		30-40 kg / 35 N 40-70 kg / 45 N 70-90 kg / 50 N 90-120 kg / 50 N	40-50 kg / 60 N 50-70 kg / 80 N 70-80 kg / 100 N 80-120 kg / 100 N	> 40 kg / 50 N
Fixed SECU foam	•	•	•	•	•
Closure					
... Zip	•	•	•	•	-
... Velcro	•	•	-	-	-
... Cord	-	•	•	-	-
... Plastic buckles	-	-	•	•	-
Whistle	-	-	-	•	-
3M® Retro-reflective strips	•	•	-	100 cm <sup>2</sup>	-
Adjustable waist belt	•	•	•	•	•
Crutch strap	-	-	-	double	•
Front zipped pocket	•	•	-	-	-
Plastic storage bag	•	•	•	•	•
For further information see	Page 40	Page 40	Page 41	Page 41	Page 37

## MAINTENANCE AND SERVICE

The regular inspection of all equipment that is concerned with the safety of life is essential. None more, than for lifejackets where the natural ageing process of the materials degrades them causing impairments in their automatic inflation and use. This is why your lifejacket should be returned to an authorized service agent or the manufacturer, to be checked every two years until the end of its ten year service life. After a successful service check your lifejacket gets a new FSR Service Disc – similar to your car's MOT!



### SECUMAR Service Check – every two years!

- Check for any mechanical damage (rips, abrasion, porosity etc).
- 16 hr inflation and residual pressure test with pressure gauge.
- Water activating the auto inflator and checking mechanism with specialist tools.
- Check manual firing mechanism with specialist tools.
- Check oral tube and valve for damage, porosity and air-tightness.
- Replace all gaskets.
- Replace firing pill.
- Rebuild using electronically controlled torque wrench.
- Check seams, webbing and all fastenings.
- Check CO<sub>2</sub> cylinder for contents and external damage (e.g.: corrosion).

As well as any professional servicing, we would always recommend checking the state of readiness of your lifejacket at the beginning of every season, the details for which can be found in the Instruction Manual.

IMPRINT: COPYRIGHT SECUMAR © – SECUMAR, SECUMATIC, SECULUX, SECUTRONIC, SECU, SECUFIT, ALPHA, ARKONA, BOLERO, CONTRA, JUMP, Neptun, SECUMATIK, SECU-AIR, SECUMAR NAUTIQUE, 'S', TETRA, SCOUT, WINGLET are all registered trademarks of Bernhardt Apparatebau GmbH u. Co. (Pinneberg, HRA 3526/HRB 2748) · 3M is a registered trademark of 3M-Deutschland GmbH, Neuss · CORDURA and Neopren are registered trademarks of DuPont · GORE and GORE-TEX are registered trademarks of W. L. Gore & Associates GmbH, Putzbrunn · Photos: Klaus Andrews, ASK e.V. · Akademische Seglergruppe Karlsruhe e.V., Dietrich Brandenburg, Alexis Courcoux, Michael Flügge, Arved Fuchs, Nils Günter, Martina John, Lars Reisberg/no-frills-sailing.com, www.segel-bilder.de, Andreas Vallbracht, Mario Wodrich, 2increase, Archiv · Layout: Alexander Wagner · We continually strive to improve our products so we reserve the right to make constructive alterations.



## ORIGINAL SECUMAR ACCESSORIES

### LIFEJACKET LIGHT



**SECULUX LED (P/N 16104):**  
SOLAS auto emergency flashing light, 75cm cable between battery and light.  
Battery capacity: circa 10.5 hrs giving 1.5 candela.  
Battery life: 5 years from date of manufacture.

### EMERGENCY LIGHT



**SECULUX L 92 (P/N 10020):**  
Very bright SOLAS constant light, 2 hrs duration, automatic activation upon righting, stable waterproof buoyant casing, drop tested to 35 m, with holder.  
Optional extra:  
Mono-Cells, stainless steel holder L92.



### SAFETY LANYARDS

**CLASSIC SAFETY LANYARD (P/N 16343):**  
3-point lanyard to DIN EN ISO 12401 with WICHARD snap hooks and overload indicator. Black/orange, for persons over 50kg.  
**JUNIOR SAFETY LANYARD (P/N 16341):**  
Safety lanyard with top quality WICHARD snap hook and lanyard to DIN EN ISO 12401. Black/orange, for children up to 50kg.

### ANTI-INVERSION CUSHION



For hoisting to the masthead. Black. The inflated cushion keeps the masthead afloat preventing inversion. Also avoids total swamping if fitted under the gunwhales of keelboats.  
**KSK 20 (P/N 720):** Vol. 20 l, 600 g, size before inflation 38 x 11 cm, 38 g CO<sub>2</sub> cartridge.  
**KSK 40 (P/N 724):** Vol. 40 l, 820 g, size before inflation 50 x 11 cm, 75 g CO<sub>2</sub> cartridge.

### ULTRA 170 PACK



**ULTRA 170 Pack (P/N 16709):**  
Consisting of SECULUX LED emergency light and nylon sprayhood.

### MANUAL OVERRIDE



**Manual Override for SECUMATIC 4001S (P/N 11899):**  
for switching off the automatic inflation function on your lifejacket.  
**Manual Override for SECUMATIC 3001S (P/N 12077):**  
with warning flag which is visible on the protective cover of the lifejacket when it is fitted.

### SECU 17 | MOB-PACKET



**SECU 17 (P/N 410-01):** Classic closed cell foam rescue lifejacket – indestructible and essential. Offers a quick connection from the boat to the casualty when used in combination with the rescue line. 3M<sup>®</sup> reflective strips, tie straps through the flotation body and made of signal yellow PE closed-cell foam. Around 150N, from 45 kg.

**MOB-Pack (P/N 11142-01):** MOB Bag (54 x 42 x 15 cm) with top cover and fixing straps complete with 30 m floating heaving line offering a better and more practical solution than other rescue slings.

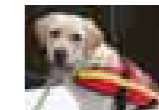
Recommended extras: Emergency light SECULUX L92, Lifting strap SECULIFT LWS25, drogue.

### CRUTCH STRAP



**Crutch Strap 2K CLICK 30 (P/N 14693):**  
Single strap, can be retro-fitted to all lifejackets since 2003 with crutch strap loops. Has two stainless steel links, separated by belt fastener.

### DOG LIFEJACKET



Buoyancy aid with body straps and handle, comes in 3 sizes:  
**Small** = 33 x 24 cm (P/N 833),  
body size: 30 – 60 cm, e. g. for a Dachshund.  
**Medium** = 46 x 34 cm (P/N 834),  
body size: 45 – 75 cm, e. g. for a Terrier.  
**Large** = 59 x 41 cm (P/N 835),  
body size: 60 – 95 cm, e. g. for an Alsatian.

### PILLS



**Pills for Inflator SECUMATIC 3001S (P/N 13024):**  
Blister pack with 4 pills.  
**PILL CAGE SECUMATIC 4001S (P/N 11435):**  
Blister pack set of 4 pills in enclosed PILL CAGE version, Spares set for simple replacement of the activating pill in the 4001S.

### RECOVERY AID



**SECULIFT LWS 25 (P/N 985):**  
Rescue and recovery aid, comprising rescue sling (3 adjustable settings), rescue sheet and 25 m buoyant line in a throw bag.  
With the SECULIFT you can make the first contact with a man overboard. The line becomes a 5 m long stable rescue sheet, at the end of which is an adjustable rescue sling (3 settings). With the help of a halyard or used directly on a winch, the SECULIFT is a real recovery aid for a small crew.

### CO<sub>2</sub>-CARTRIDGES



Scan the QR-Code to find the right replacement cylinder!

**CO<sub>2</sub>-re-arming kits with 2 pills and pins for SECUMATIC 3001S:**  
16 g, 22 g, 32 g, 38 g, 43 g, 56 g, 75 g  
**CO<sub>2</sub>-dock for SECUMATIC 4001S bayonet system with two activating pills in pill cage version:**  
32 g-Dock, 43 g-Dock, 56 g-Dock, 60 g-Dock



HAVE A  
SAFE DAY

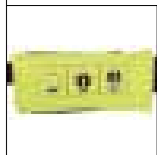
# FREE 100

P/N 15872

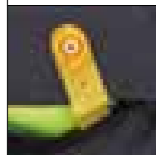
- Inflatable rescue aid
- Fully certified inflatable buoyancy chamber
- Easily ,re-armed' using replaceable CO<sub>2</sub> cylinder
- Weight: only 500g



3 safety pictograms on the back



Deflation tag in pocket



Yellow handle to assist ,over the head' in emergency



CE

FOR STAND-UP-PADDLERS AND SWIMMERS CO<sub>2</sub> Cylinder: 22 g (P/N 15866)

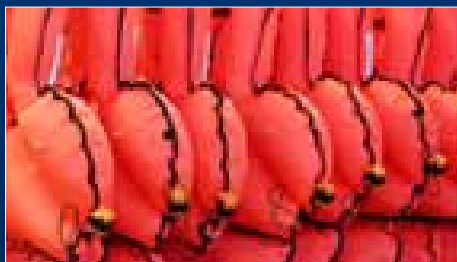


# MADE IN GERMANY

Ongoing research, sophisticated quality management and „Made in Germany“ should leave you in no doubt about your SECUMAR lifejacket.

Safety at sea - SECURitas in MARE - is not only the inspiration for our name but also our credo at work, to make watersports safer all over the world. Everything from the first concept, design and manufacturing through to servicing of the products takes place in our state-of-the art facility in Holm just outside Hamburg in Germany.

Around 100 highly skilled staff use their knowledge and experience to maintain the highest quality standards, thereby keeping SECUMAR products as world leaders in sea safety equipment.



Our Goal: your safety on the water.



Bernhardt Apparatebau GmbH u. Co.  
Lifesaving Equipment for Sea and Air  
PO Box 1190, D-25487 Holm, Germany  
Tel.: +49-4103-125-0  
E-Mail: [info@secumar.com](mailto:info@secumar.com)  
[www.secumar.com](http://www.secumar.com)

SECUMAR is a member of the German association of manufacturers and importers of life-saving and rescue equipment (FSR) an union of suppliers and importers of all water rescue equipment. For further information, see [www.fsr.de.com](http://www.fsr.de.com)

